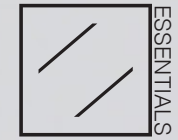


CANADA

LIRA CLOTHING 2022



Our collective vision of the
Essentials is to inspire and promote
individual creativity while pushing forward
our fundamental principles of quality and comfort.
Every day experience is defined by
Essentials.



We have added a new piece to our ever

growing Essentials line!

Introducing the new Unisex Pigment Dye Crew Neck Fleece!

We love the way a good Pigment Dye looks and feels.

It's a perfect blend of new and old offered in

all of our current favorite colors.

Our 9oz (300 gm) 100% Cotton Fleece comes in

a Standard Fit for maximum comfort and features 1 x 1

ribbing at neck, cuffs and waistband.

Don't Sleep in 2022!



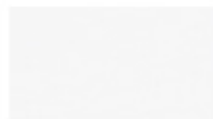
LE1019 PIGMENT DYE CREW NECK FLEECE | XS - XXL | 100% COTTON | **USA:** w/s \$24 msrp \$48 **CAN:** w/s \$27.50 msrp \$55



BLACK



STONE



WHITE



ZINC



EMERALD



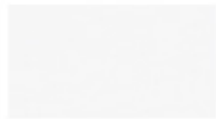
LE1016 PIGMENT DYE TEE | XS - XXL | 100% COTTON | **USA:** w/s \$16 msrp \$32 **CAN:** w/s \$19 msrp \$38



BLACK



STONE



WHITE



ZINC



CORAL



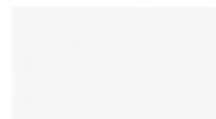
LE1017 PIGMENT DYE LS TEE | XS - XXL | 100% COTTON | USA: w/s \$18 msrp \$36 CAN: w/s \$21 msrp \$42



BLACK



STONE



WHITE



ZINC



CORAL



LE1014 PIGMENT DYE FLEECE JOGGER | XS - XXL | 80% COTTON 20% POLY | **USA:** w/s \$20 msrp \$40 **CAN:** w/s \$25 msrp \$50



BLACK



GREY



STONE



ZINC



EMERALD



LE1015 PIGMENT DYE FLEECE JOGGER SHORT | XS - XXL | 80% COTTON 20% POLY | **USA:** w/s \$17.50 msrp \$35 **CAN:** w/s \$22.50 msrp \$45



BLACK



GREY



STONE



ZINC



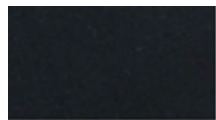
EMERALD



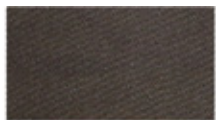
😊 AVAILABLE IN YOUTH S - XL



LC6754 WEEKEND JOGGER 2.0 | 28 - 38 | 98% COTTON 2% SPANDEX | USA: w/s \$25 msrp \$50 CAN: w/s \$32.50 msrp \$65
LY0001 WEEKEND JOGGER 2.0 | S - XL | 98% COTTON 2% SPANDEX | USA: w/s \$20 msrp \$40 CAN: w/s \$27.50 msrp \$55



BLACK



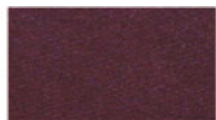
BROWN



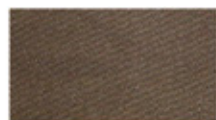
EMERALD



OLIVE



BURGUNDY



KHAKI



CHARCOAL



CAMO

😊 AVAILABLE IN YOUTH S - XL



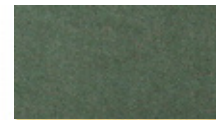
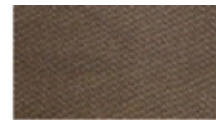
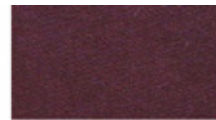
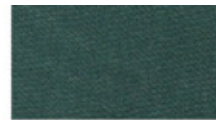
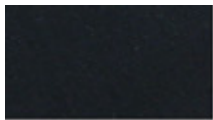
LC6843 WEEKDAY JOGGER SHORT 2.0
LY0003 WEEKDAY JOGGER SHORT 2.0

28 -38
S -XL

98% COTTON 2% SPANDEX
98% COTTON 2% SPANDEX

USA: w/s \$20 msrp \$40
USA: w/s \$16 msrp \$32

CAN: w/s \$25 msrp \$50
CAN: w/s \$22.50 msrp \$45



BLACK

SLATE

EMERALD

SAGE

BURGUNDY

KHAKI

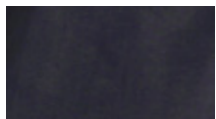
CHARCOAL

CAMO

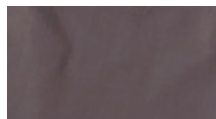
OLIVE



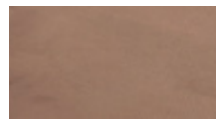
LC7221 FULL COURT NYLON JOGGER | XS - XXL | 100% NYLON | **USA:** w/s \$20 msrp \$40 **CAN:** w/s \$25 msrp \$50



BLACK



CHARCOAL



KHAKI



SLATE



BURGUNDY



SAGE



EMERALD



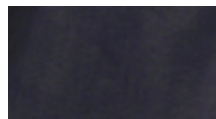
STONE



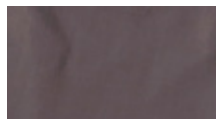
LILAC



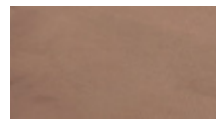
LC7212 COURT NYLON SHORT | XS - XXL | 100% NYLON | **USA:** w/s \$17.50 msrp \$35 **CAN:** w/s \$22.50 msrp \$45



BLACK



CHARCOAL



KHAKI



SLATE



BURGUNDY



SAGE



EMERALD



STONE



LILAC



LC6833 SHOOTY WOVEN | XS - XXL | 100% COTTON | USA: w/s \$20 msrp \$40 CAN: w/s \$25 msrp \$50



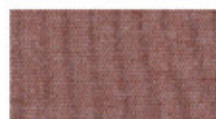
BLACK



GREY



EMERALD



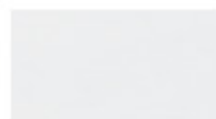
RED



MUSTARD



PINK



WHITE



ZINC



LC6835 DOUGLAS LS WOVEN | XS - XXL | 100% COTTON | USA: w/s \$22.50 msrp \$45 CAN: w/s \$27.50 msrp \$55



BLACK



GREY



EMERALD



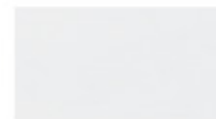
RED



MUSTARD



PINK



WHITE



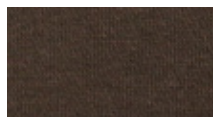
ZINC



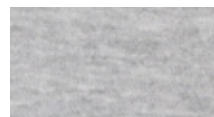
LE1008 PULLOVER HOOD | XS - XXL | 100% COTTON | **USA:** w/s \$24 msrp \$48 **CAN:** w/s \$27.50 msrp \$55



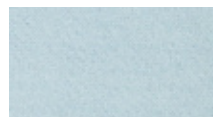
BLACK



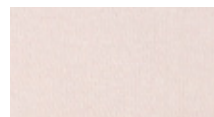
BROWN



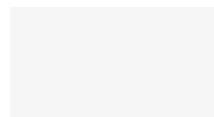
HEATHER GREY



LT. BLUE



PINK



WHITE



LE1009 PULLOVER HOOD VINTAGE WASH | XS - XXL | 100% COTTON | **USA:** w/s \$26 msrp \$52 **CAN:** w/s \$30 msrp \$60



BLACK



NAVY



OLIVE



BURGUNDY



ZINC



CAMEL



MUSTARD



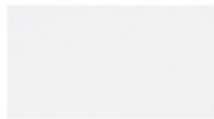
LE1000 POCKET TEE | XS - XXL | 100% COTTON | **USA:** w/s \$15 msrp \$30 **CAN:** w/s \$18 msrp \$36



BLACK



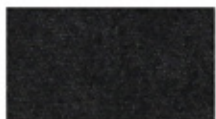
HEATHER GREY



WHITE



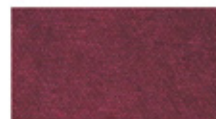
LE1001 POCKET TEE MINERAL WASH | XS - XXL | 100% COTTON | **USA:** w/s \$16 msrp \$32 **CAN:** w/s \$19 msrp \$38



BLACK



NAVY



BURGUNDY

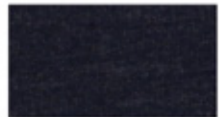




LE1003 POCKET TEE TRI-BLEND | XS - XXL | 50% COTTON 25% RAYON 25% POLY | **USA:** w/s \$16 msrp \$32 **CAN:** w/s \$19 msrp \$38



BLACK



HEATHER NAVY



HEATHER PLUM



HEATHER OLIVE



HEATHER GREY



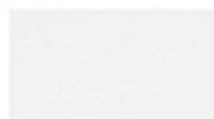
LE1004 HENLEY | XS - XXL | 100% COTTON | **USA:** w/s \$17 msrp \$34 **CAN:** w/s \$20 msrp \$40



BLACK



HEATHER GREY



WHITE



LE1005 HENLEY MINERAL WASH | XS - XXL | 100% COTTON | **USA:** w/s \$18 msrp \$36 **CAN:** w/s \$21 msrp \$42



BLACK



NAVY



BURGUNDY





LE1002 VINTAGE WASH TEE | XS - XXL | 100% COTTON | **USA:** w/s \$14 msrp \$28 **CAN:** w/s \$16 msrp \$32



BLACK



NAVY



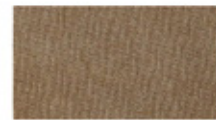
OLIVE



BURGUNDY



ZINC



CAMEL



MUSTARD



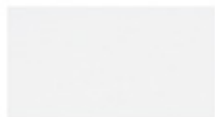
LE1006 POCKET TANK | XS - XXL | 100% COTTON | **USA:** w/s \$15 msrp \$30 **CAN:** w/s \$18 msrp \$36



BLACK



HEATHER GREY



WHITE



LE1007 POCKET TANK MINERAL WASH | XS - XXL | 100% COTTON | **USA:** w/s \$16 msrp \$32 **CAN:** w/s \$19 msrp \$38



BLACK



NAVY



BURGUNDY





LC7112 CARSON BEANIE | OSFM | 100% ACRYLIC | **USA:** w/s \$5 msrp \$10 **CAN:** w/s \$7.50 msrp \$15



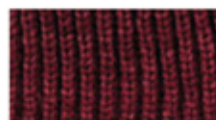
BLACK



EMERALD



OLIVE



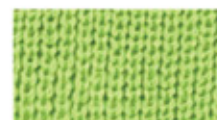
BURGUNDY



RED



ROYAL BLUE



NEON GREEN



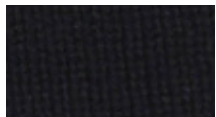
NEON ORNAGE



VINTAGE WHITE



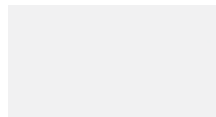
LC1020 PARRALEL HAT | OSFM | 100% COTTON | **USA:** w/s \$10 msrp \$20 **CAN:** w/s \$15 msrp \$30



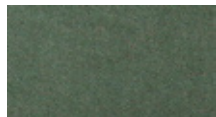
BLACK



STONE



WHITE



OLIVE

SALES CONTACTS

LIRA CLOTHING
3421 VIA OPORTO #201
NEWPORT BEACH, CA 92663

SEAN HARRIS
NATIONAL SALES MGR
C. 949.929.8270
sean@liraclimbing.com

INTERNATIONAL

LIRA CANADA INC.
1443 RUE BEGIN,
SAINT-LAURENT QC H4R 1V8
CANADA (LIRA)
O. 877-507-5472

MARC-A. SAUCIER
CANADIAN SALES MGR
C. 877.507.5472
marc@liraclimbing.com

JON H. GENIER
QUEBEC & MARITIME
C. 450.542.0396
jonh@agencejg.com

J.S. WEIR
WESTERN CANADA
C. 778.320.9347
js@waydangerous.com

